

# USER INSTRUCTION SHEET

## Im.P.Ac.T Body Calipers

Model No.: R00BC22-00

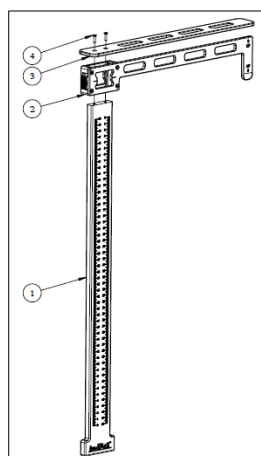
### General Description of the product:

Im.P.Ac.T Body Calipers are made of carbon fiber for light weight and rigidity. Components are assembled with metal screws for strength and stability. The movable and non-removable pointer indicates clear measurements on the scale. The pointer can be locked at any position by slide and lock mechanism.

### Intended use:

Im.P.Ac.T Body Calipers can be used to determine central-axis and off-axis measurements on couch top distances.

### Technical drawing:



### List of components:

No.	Item name	Qty
1	Body Caliper scale	1
2	Body Caliper Pointer	1
3	Body Caliper Top Plate	1
4	Head Screw	2

### Operational procedure:

Step 1	Place the Body Caliper top plate (3) on the couch top beneath the patient
Step 2	Measure the axis required using Body caliper pointer (2) on the caliper scale (1)
Step 3	Lock the pointer using the lock on Body Caliper pointer
Step 4	The line on the measuring scale that coincides with the line on pointer shows the measurement

### Maintenance instruction:

- Avoid storing under the sunshine and in warm and wet environment
- Wipe thoroughly with neutral wash based antiseptic cleaner like Bacillol 25. Allow to dry before next use
- The product can be disposed off with dry waste

**NOTE:** Do not use the device if any of the part is found to be defective.

# TECHNICAL DATA SHEET

## Im.P.Ac.T Body Calipers

Model No.: R00BC22-00

### Technical details:

1	Material used	Carbon fiber
2	Weight of Caliper	0.764kg
3	Maximum scale	50cm
4	MRI compatibility	No
5	CE Mark	No

### Product Overview:

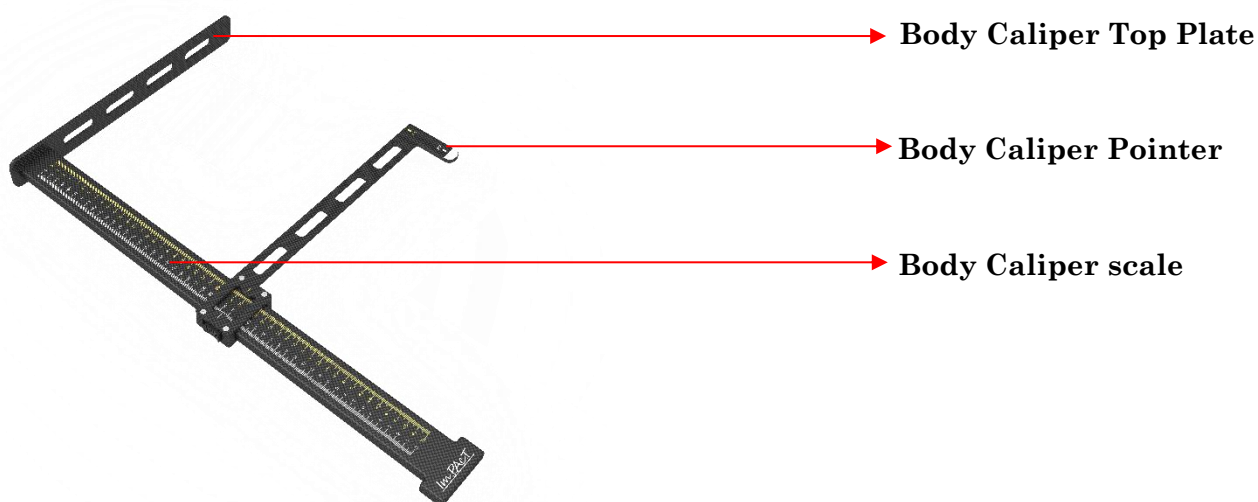


Fig: Highlights of Im.P.Ac.T Body Calipers

### **Panacea Medical Technologies Pvt Ltd**

Plot #116, Shailendra Techno Park Pvt. Ltd, 4th Floor, Road No. 3, EPIP Area, Phase-I, Whitefield, Bangalore – 560 066, Karnataka, India.

Ph: +91-80-42428700, 41156988, FAX: +91-80-42428710

Website: <http://www.panaceamedical.com>,

Email: [contact@panaceamedical.com](mailto:contact@panaceamedical.com)



Copyright © by Panacea Medical Technologies Pvt. Ltd  
All rights reserved. Panacea Medical Technologies Pvt.  
Ltd and the Panacea Medical Technologies Pvt. Ltd  
logo are trademarks of Panacea Medical Technologies  
Pvt. Ltd, registered in India.